

EPSYLON

EPSYLON – POLE TOP LIGHT

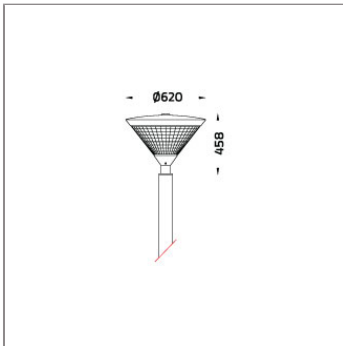
POLE MOUNTED



LAST UPDATE: 15-05-2024



EPSYLON is the family of pole top and wall mount luminaires with unshielded symmetrical distribution. High quality PMMA material is used to avoid discoloration of the diffuser. EPSYLON gives a broad spread light distribution with low glare. This luminaire is generally used to illuminate gardens, parks, pedestrian, squares and open spaces. It is assembled with high brightness LEDs. EPSYLON with traditional HID light source and E27 holder for Led retrofit lamps are also available. The recommended mounting height is between 3 – 5 meters. Available as an option are Aluminium Poles, Galvanized steel poles and anchorage unit for concrete foundations.



Technical Data



Ordering Code :	7210-0-3-711-XX
Lamp :	HIE-CE
Socket :	E27
CCT :	3000-4200 K
Lamp Lumen :	5900 lm
Luminaire Lumen :	5900 lm
Lamp Wattage :	70 W
Luminaire Wattage :	70 W
Ambient Temperature :	25°C
Controller :	On-Off
Input Voltage :	230Vac 50Hz
Net Weight :	6.90 kg.

Ordering code guide

XXXX-X-X-XXX-XX
A B C D E

- A Product Code
- B Reflector
- C Electrical Component
- D Lamp
- E Color



Icon definition

*Due to the constancy of product development, we reserve the right to alter all specification without prior notice.

EPSYLON


EPSYLON – POLE TOP LIGHT

POLE MOUNTED

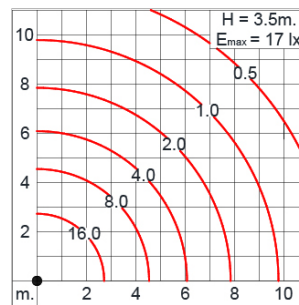
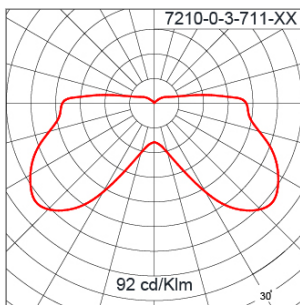


LAST UPDATE: 15-05-2024

Specification

IEC Standard	IEC 60598-1 General Requirement IEC 60598-2-1 Fixed Luminaires
Protection	IP54 Class I
IK Rating	Protection against mechanical impact IK08 on body and IK06 optical part.
Luminaires Body Housing	High-pressure die cast aluminum alloy body and components. Spun aluminum alloy component.
Coating Process	Nano Ceramic surface conversion, resistant to corrosive environment. Luminaire primarily coated with epoxy resin and top coated with UV stabilized polyester powder and cured in digital temperature controlled chamber at 200°C.
Diffuser	Weather resistant injected prismatic PMMA cover.
Gasket	Weather resistant silicone gasket. Working temperature -40°C to +200°C.
External Screws	External screws are in stainless steel with protection grease.
Lamp Holder	E27 lampholder in ceramic body. VDE/ ENEC approved.
Ballast	Vacuum impregnated magnetic ballast for HID lamp. ENEC approved.
Capacitor	Aluminum case capacitor with over pressure safety device. ENEC approved.
Ignitor	Electronic ignitor with automatic switch-off function. ENEC approved.
Internal Wire	Tinned copper conductor with silicone insulated internal wire. IMQ approved. Working temperature -40°C to +180°C. HID control gear wired with double insulated silicone cable and compatible to be operated under ignition voltage up to 5KV.
Terminal Block	Terminal block in GFR PA6.6 for cable with cross section up to 2.5 sqmm. VDE approved. Class1 luminaire provided with the earth connection.
Caution	Installation work has to be carried on according to the enclosed installation manual.
Color	 Black O1 Graphite O2 Dark Grey O3 Aluminum Silver O4 White O6 Wooden Brown O7

Light Distribution



*Due to the constancy of product development,
we reserve the right to alter all specification
without prior notice.

EPSYLON

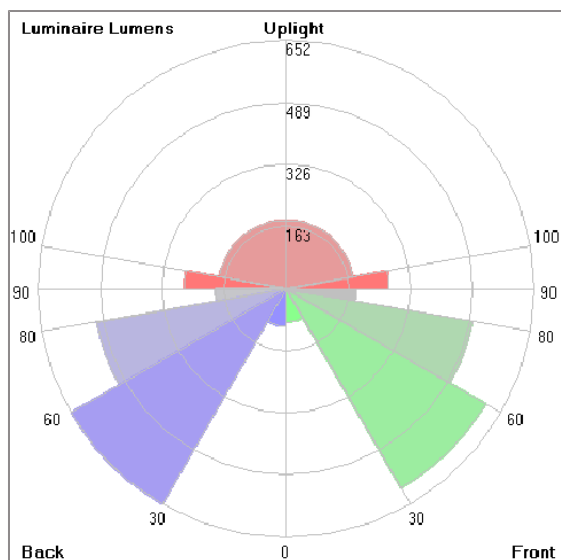
EPSYLON – POLE TOP LIGHT

POLE MOUNTED



LAST UPDATE: 15-05-2024

Bug Report



Lum. Classification System [LCS]

LCS	Zone	%Lumens	%Lamp	%Lum
FL	[0-30]	88.4	1.5	2.7
FM	[30-60]	604.1	10.2	18.5
FH	[60-80]	495.5	8.4	15.2
FVH	[80-90]	183.5	3.1	5.6
BL	[0-30]	98.9	1.7	3.0
BM	[30-60]	652.1	11.1	20.0
BH	[60-80]	505.9	8.6	15.5
BVH	[80-90]	186.2	3.2	5.7
UL	[90-100]	268.3	4.5	8.2
UH	[100-180]	178.3	3.0	5.5
Total		3261.2	55.3	100.0
BUG Rating		B2-U3-G2		

*Due to the constancy of product development, we reserve the right to alter all specification without prior notice.

EPSYLON

EPSYLON – POLE TOP LIGHT

POLE MOUNTED

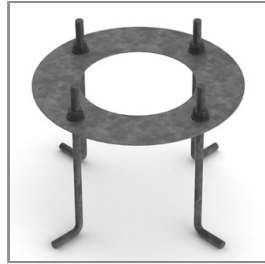
 **Unilamp**

LAST UPDATE: 15-05-2024

Accessories



Ordering Code:
ALUMINUM-POLE-EPSYLON
Please contact Sales
Representative



Ordering Code:
AUN-ACB-0005-00
Anchor Bolt Kit for
Aluminium Pole