



MASTER VALUE LED spot MV

MAS LED spot VLE D 6.2-80W GU10 940 36D

MASTER Value, LED, PAR16, 80 W, GU10, 4000 K, 575 lm, CRI 90, 25000 hour(s)

Delivering a warm, halogen-like accent beam, MASTER VALUE is a perfect fit for spot lighting. Thanks to its high CRI, it realizes more natural colors, creating cozy and comfortable ambiances for residential and hospitality projects, and emphasizing the beauty of merchandise in retail. These LED spots MV GU10 have the familiar look and feel of spot lamps, keeping the classic beauty of glass spots and adding the strong performance of LED technology. The dimming function enables you to create the atmosphere you desire, and it works with broad selection of dimmers. MASTER VALUE also offers more energy savings than normal LED spots.

Warnings and Safety

- Operating temperature range is between -20° C and 45° C ambient
- Only to apply in dry or damp locations and most of open fixtures with lamp-holders that offer sufficient space (10 mm free air space)
- Not intended for use with emergency light fixtures or exit lights

Product data

General Information		Warranty period	
Cap-Base	GU10	5 years	
Nominal lifetime	25,000 hour(s)	Light Technical	
Switching Cycle	50,000	Color Code	940 [CCT of 4000K]
Lighting Technology	LED	Beam Angle (Nom)	36 degree(s)
Flux measurement reference	Narrow Cone	Luminous Flux	575 lm
		Luminous Intensity (Nom)	850 cd

MASTER VALUE LED spot MV

Color Designation	Cool White (CW)
Correlated Color Temperature (Nom)	4000 K
Luminous Efficacy (rated) (Nom)	92.00 lm/W
Color Consistency	<6
Color rendering index (CRI)	90
LLMF At End Of Nominal Lifetime (Nom)	70 %
Luminous Flux in 90° Cone (Rated)	575 lm
Photobiological safety according to EN 62471	RG1

Operating and Electrical

Line Frequency	50 to 60 Hz
Input Frequency	50 to 60 Hz
Power Consumption	6.2 W
Lamp Current (Nom)	33 mA
Wattage Equivalent	80 W
Starting Time (Nom)	0.5 s
Warm-up time to 60% light	0.5 s
Power Factor (Fraction)	0.88
Voltage (Nom)	220-240 V

Temperature

T-Case Maximum (Nom)	80 °C
----------------------	-------

Controls and Dimming

Dimmable	Only with specific dimmers
----------	----------------------------

Mechanical and Housing

Bulb Shape	PAR16
Net Weight (Piece)	0.038 kg

Approval and Application

Energy Efficiency Class	F
Suitable For Accent Lighting	Yes
Energy Consumption kWh/1000 h	7 kWh
EPREL Registration Number	391908
CE mark	Yes
EU RoHS compliant	Yes
EyeComfort	Yes
Flickering value (PstLM) - Flickering value as per EN 61000-3-3	1
Stroboscopic effect visibility measure (SVM)	0.4
Ambient temperature range	-20 to +45 °C

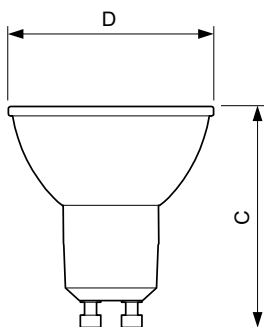
Application Conditions

can it be used in closed luminaires	No
-------------------------------------	----

Product Data

Order product name	MAS LED spot VLE D 6.2-80W GU10 940 36D
Full product name	MAS LED spot VLE D 6.2-80W GU10 940 36D
Full product code	871869970523700
Order code	929002066002
Material Nr. (12NC)	929002066002
Numerator - Quantity Per Pack	1
EAN/UPC - Product/Case	8718699705237
Numerator - Packs per outer box	10
EAN/UPC - Case	8718696708002

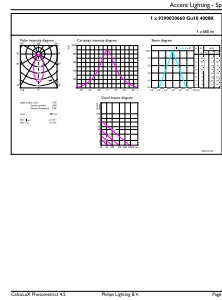
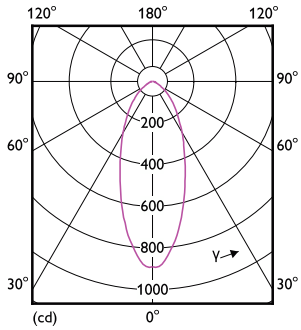
Dimensional drawing



Product	D	C
MAS LED spot VLE D 6.2-80W GU10 940 36D	50 mm	54 mm

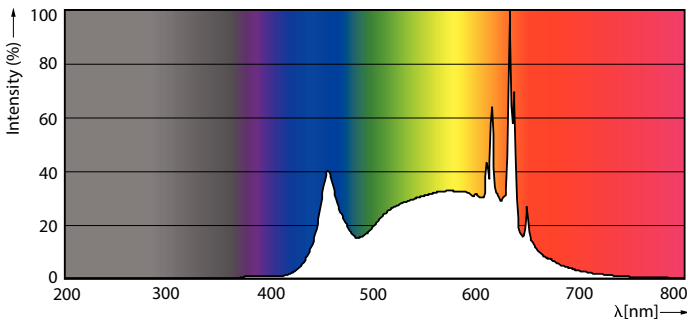
MASTER VALUE LED spot MV

Photometric data



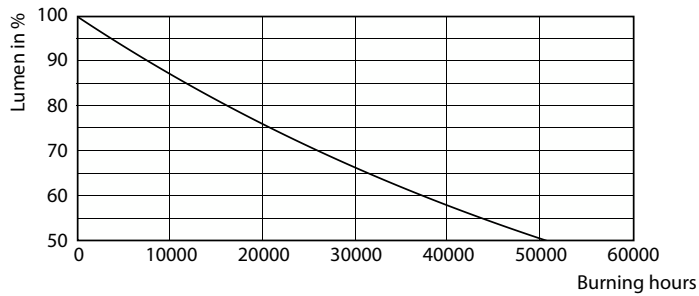
Light Distribution Diagram - MAS LED spot VLE D 6.2-80W GU10 940 36D

Accent Lighting Spots - MAS LED spot VLE D 6.2-80W GU10 940 36D

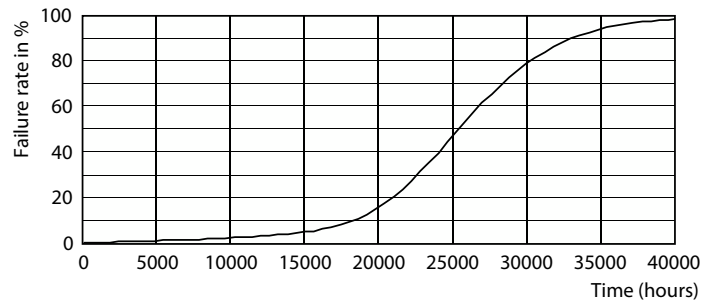


Spectral Power Distribution Colour - MAS LED spot VLE D 6.2-80W GU10 940 36D

Lifetime



Lumen Maintenance Diagram - MAS LED spot VLE D 6.2-80W GU10 940 36D



25K LED

MASTER VALUE LED spot MV

